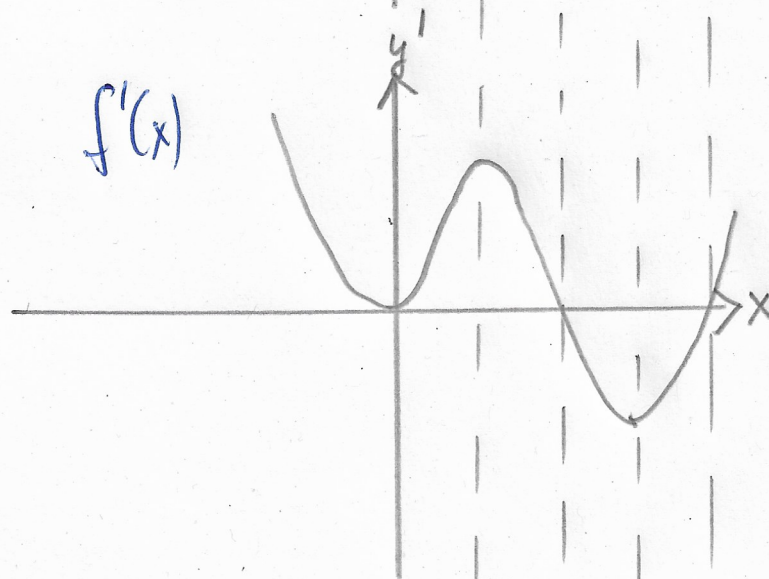
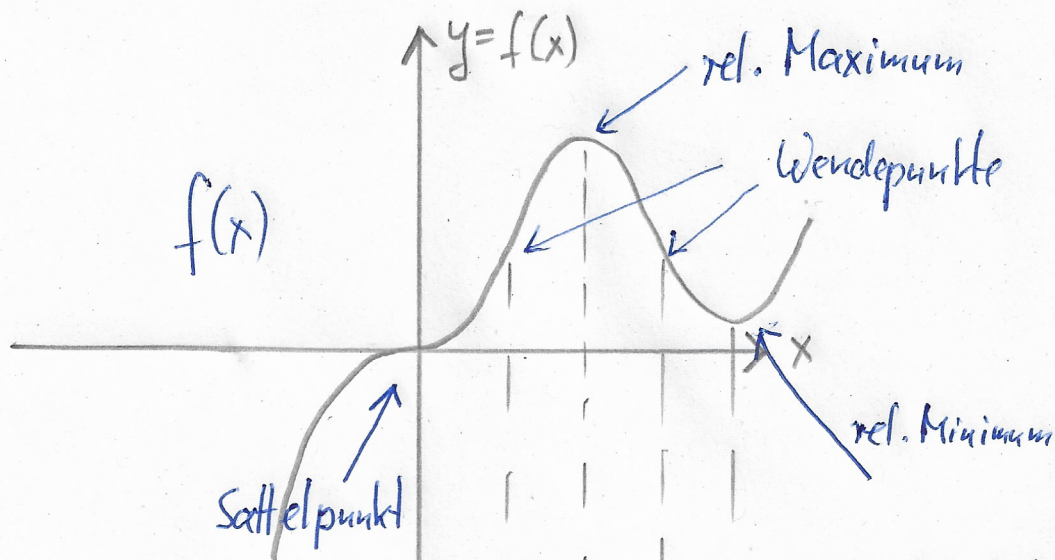
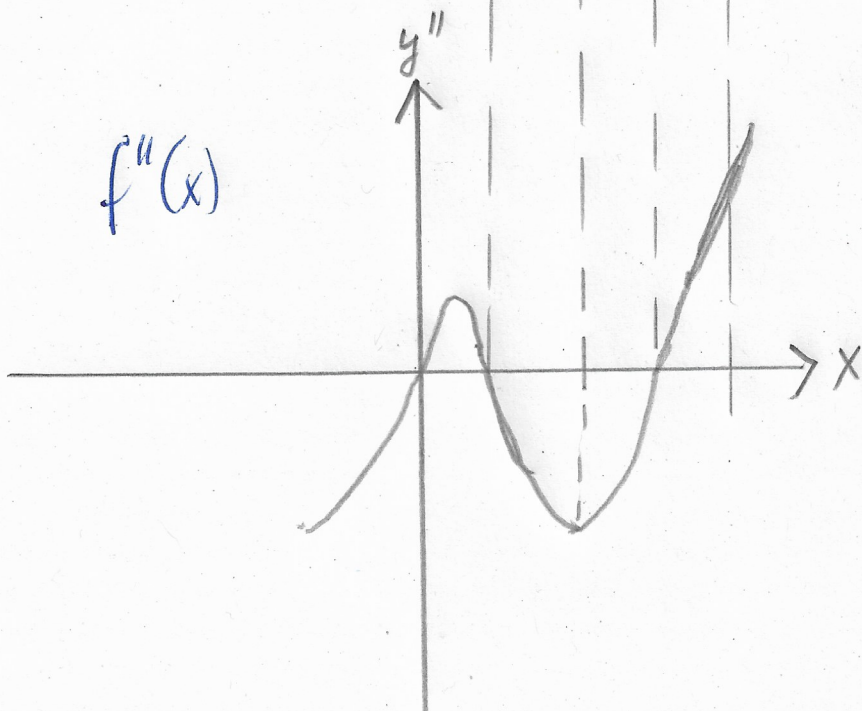


Kurvendiskussion



An Extrema: $f'(x)=0$
 $f''(x) \neq 0$
 Maximum: $f''(x) < 0$
 Minimum: $f''(x) > 0$

An Wendepunkten:
 $f''(x) = 0$
 $f'(x) \neq 0$



An Sattelpunkten:
 $f'(x)=0$ UND $f''(x)=0$